

STONECOLLECTION

81x162 32"x64" - 60x120 24"x48"
60x60 24"x24" - 31x62 12"x24"



Il look cemento dal carattere vibrante e dalle soavi sfumature, un connubio perfetto capace di creare contesti dalla grande valenza estetica. I formati ed i colori la rendono adatta alle architetture contemporanee evidenziando la ricchezza delle superfici.

The vibrant character and sweet nuances of this cement look are a perfect combination for the achievement of an environment of great aesthetic value. Sizes and colors fit for contemporary architectures highlighting the richness of the surfaces.



STONECOLLECTION

81x162 32"x64" - 60x120 24"x48" - 60x60 24"x24" - * 31x62 12"x24"

GRES PORCELLANATO IMPASTO COLORATO
COLORED BODY PORCELAIN STONEWARE
GRÈS CÉRAME MASSE COLORÉ
FEINSTEINZEUG MIT EINGEFAERBTEN SCHERBEN

* **GRES PORCELLANATO**
* PORCELAIN STONEWARE
* GRÈS CÉRAME
* FEINSTEINZEUG



R9

DCOF
≥ 0.42

HD

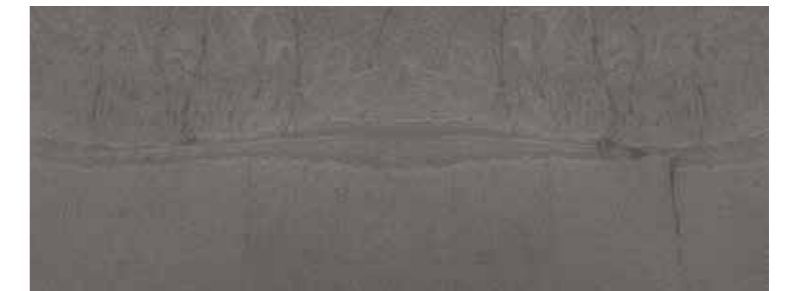
COLORI • COLORS • COULEURS • FARBEN



White



Light Grey



Dark Grey



Beige

STONECOLLECTION WHITE



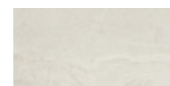
004117/80 111 ■ ★
 Stone Collection White Rettificato
81x162 32"x64"
 Autolivellante • Self leveling



003990/68 93 ■
 Stone Collection White Rettificato
60x120 24"x48"



003986/40 61 ■
 Stone Collection White Rettificato
60x60 24"x24"



003933/37 89 ■
 Stone Collection White Naturale
 * **31x62** 12"x24"



STONE COLLECTION WHITE 60x120 24"x48"

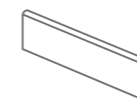
MOSAICS AND TRIMS



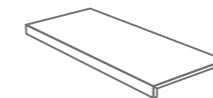
004039/180 105 ■
 Mosaico 5x5 White
30x30 12"x12" 12



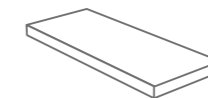
004089/29 25 ■
 Mosaico Esagonetta White
29x29 11"x11" 10



Battiscopa 7,2x60 15 ■
004224/09 White 20
 Battiscopa 7,2x62 15 ■
004035/09 White 20



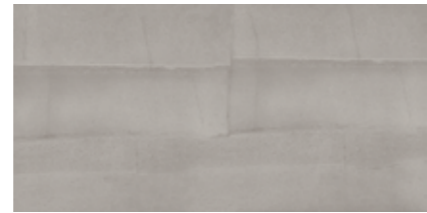
★ Gradino Frontale 30x60 26 ■
004331/132 White 1



★ Gradino Angolare DX/SX 30x60 38 ■
004335/204 White 1

★ Gradini disponibili solo su ordinazione • Steps available on demande

STONECOLLECTION LIGHT GREY



004118/80 111 ■ ★
 Stone Collection Light Grey Rettificato
81x162 32"x64"
 Autolivellante • Self leveling



003993/68 93 ■
 Stone Collection Light Grey Rettificato
60x120 24"x48"



003989/40 61 ■
 Stone Collection Light Grey Rettificato
60x60 24"x24"



003936/37 89 ■
 Stone Collection Light Grey Naturale
 * **31x62** 12"x24"



STONE COLLECTION LIGHT GREY 60x120 24"x48" DARK GREY 60x120 LIGHT GREY 60x60 24"x24"

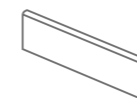
MOSAICS AND TRIMS



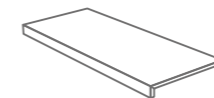
004042/180 105 ■
 Mosaico 5x5 Light Grey
30x30 12"x12" 12 ■



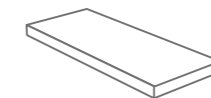
004091/29 25 ■
 Mosaico Esagonetta
 Light Grey
29x29 11"x11" 10 ■



Battiscopa 7,2x60 15 ■
004225/09 Light Grey 20 ■
 Battiscopa 7,2x62 15 ■
004038/09 Light Grey 20 ■



★ Gradino Frontale 30x60 26 ■
004332/132 Light Grey 1 ■



★ Gradino Angolare DX/SX 30x60 38 ■
004336/204 Light Grey 1 ■

★ Gradini disponibili solo su ordinazione • Steps available on demande

STONECOLLECTION DARK GREY



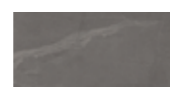
10

003992/68 93 ■
Stone Collection Dark Grey Rettificato
60x120 24"x48"



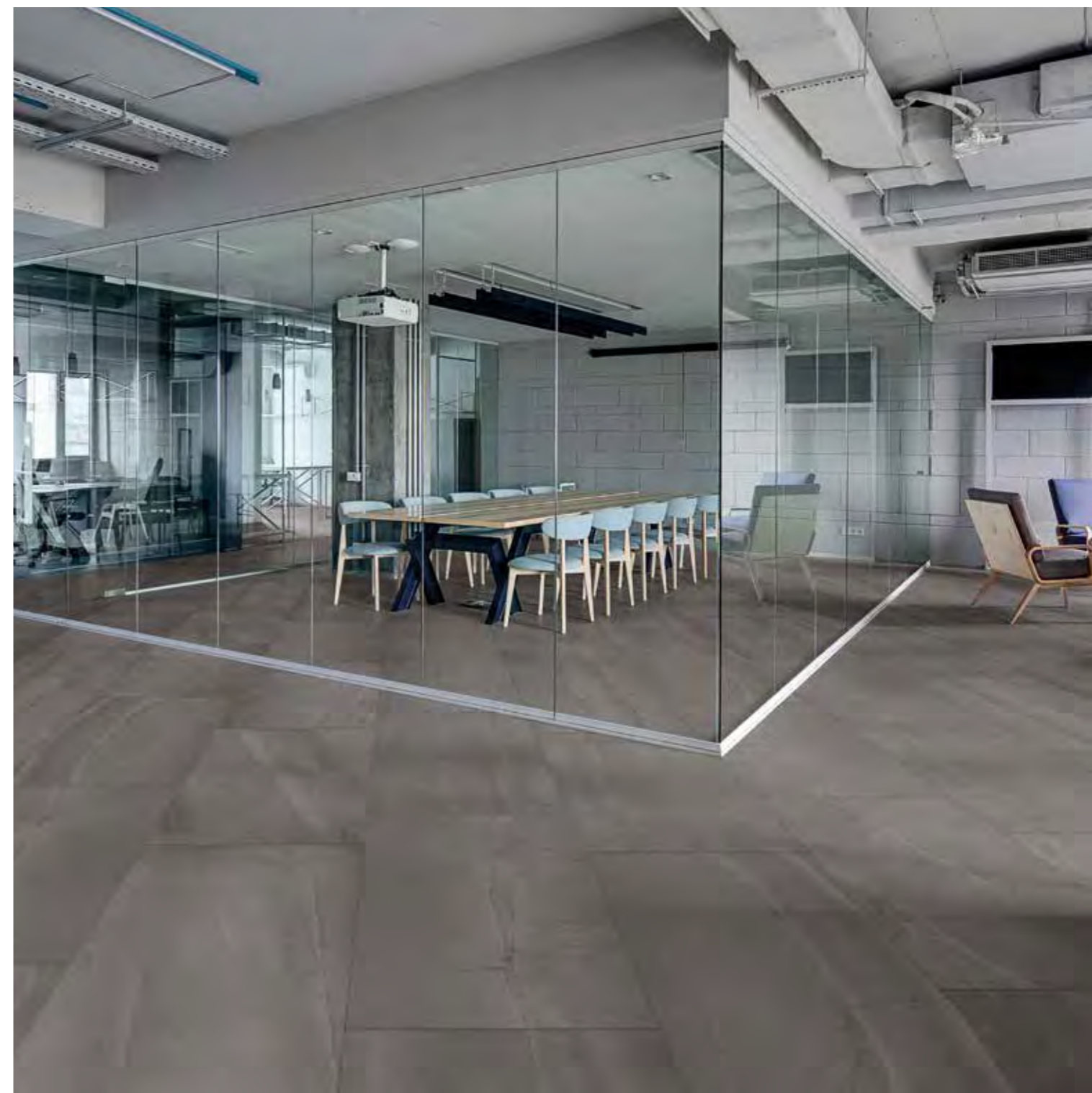
20

003988/40 61 ■
Stone Collection Dark Grey Rettificato
60x60 24"x24"



40

003935/37 89 ■
Stone Collection Dark Grey Naturale
*** 31x62** 12"x24"



STONE COLLECTION DARK GREY 60x120 24"x48"

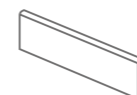
MOSAICS AND TRIMS



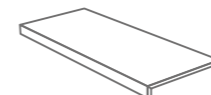
004041/180 105 ■
Mosaico 5x5 Dark Grey
30x30 12"x12" 12



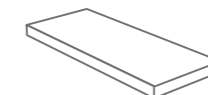
004088/29 25 ■
Mosaico Esagonetta
Dark Grey
29x29 11"x11" 10



Battiscopa 7,2x60 15 ■
004226/09 Dark Grey 20
Battiscopa 7,2x62 15 ■
004037/09 Dark Grey 20



★ Gradino Frontale 30x60 26 ■
004333/132 Dark Grey 1



★ Gradino Angolare DX/SX 30x60 38 ■
004337/204 Dark Grey 1

★ Gradini disponibili solo su ordinazione • Steps available on demande

STONECOLLECTION BEIGE



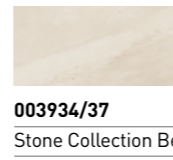
10

003991/68 93 ■
Stone Collection Beige Rettificato
60x120 24"x48"



20

003987/40 61 ■
Stone Collection Beige Rettificato
60x60 24"x24"



40

003934/37 89 ■
Stone Collection Beige Naturale
*** 31x62** 12"x24"



STONE COLLECTION BEIGE 31x62 12"x24" BEIGE 60x60 24"x24"

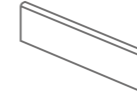
MOSAICS AND TRIMS



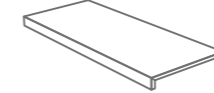
004040/180 105 ■
Mosaico 5x5 Beige
30x30 12"x12" 12



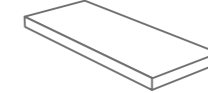
004090/29 25 ■
Mosaico Esagonetta Beige
29x29 11"x11" 10



Battiscopa 7,2x60 15 ■
004227/09 Beige 20



* Gradino Frontale 30x60 26 ■
004334/132 Beige 1



* Gradino Angolare DX/SX 30x60 38 ■
004338/204 Beige 1

Battiscopa 7,2x62 15 ■
004036/09 Beige 20

* Gradini disponibili solo su ordinazione • Steps available on demande

* Gli imballi speciali degli articoli in questo formato saranno addebitati ad Euro 50,00 l'uno • Special package of items in this size will be charged Euro 50,00/each

PESI E MISURE / WEIGHT AND SIZES / POIDS ET MESURES / GEWICHTE UND VERPACKUNGEN							
dimensioni sizes dimensions abmessungen	spessore thickness épaisseur stärke	pz/collo pcs/box pc/boite stk/ktn	mq/collo sqm/box m/boite qm/ktn	kg/collo kg/box kg/boite kg/ktn	colli/pallet box/europal boites/europal ktn/europal	mq/pallet sqm/pallet m/pallet qm/pallet	kg/europal kg/europal kg/europal kg/europal
Fondo 81x162 Rettificato	10 mm	2	2,63	58,50	14	36,75	880 *
Fondo 60x120 Rettificato	10 mm	2	1,44	30,50	30	43,20	940
Fondo 60x60 Rettificato	9,5 mm	5	1,80	32,95	24	43,20	815
Fondo 31x62 Naturale	9 mm	7	1,35	23,10	60	81,00	1410

STONECOLLECTION

WHITE

LIGHT GREY

DARK GREY

BEIGE

CARATTERISTICHE TECNICHE • TECHNICAL FEATURES

GRES PORCELLANATO • PORCELAIN STONEWARE • GRÈS CÉRAME • FEINSTEINZEUG

UNI EN 14411 BIA ALLEGATO G (ISO 13006)



Caratteristica tecnica Technical feature Caractéristique technique Technische Eigenschaft	Norma Norm Norme Norm	Valore richiesto dalle norme Required standards Valeur prescrite par les normes Normvorgabe	STONE COLLECTION
Assorbimento d'acqua Water absorption Absorption d'eau Wasseraufnahme	UNI EN ISO 10545-3	≤ 0,5%	≤ 0,5%
Resistenza alla flessione Bending strength Résistance à la flexion Biegefestigkeit	UNI EN ISO 10545-4	≥ 35 N/mm ²	Conforme Corresponding Conforme Entsprechend
Resistenza al gelo Resistance to frost Résistance aux gel Frostbeständigkeit	UNI EN ISO 10545-12	Nessuna alterazione No alteration Aucune alteration Keine Veränderung	Non gelivo Frost-proof Non gélifs Frostsicher
Caratteristiche di regolarità Regularity characteristics Caractéristiques de régularité Regelmäßigkeit	UNI EN ISO 10545-2	Lunghezza e larghezza / Lenght and width Longuer et largeur / Länge und breite	± 0,6% max
		Spessore / Thickness Epaisseur / Stärke	± 5% max
		Rettilineità spigoli / Straightness of sides Rectitude des arêtes / Kantengeradheit	± 0,5% max
		Ortogonalità / Rectangularity Orthogonalité / Rechtwinkligkeit	± 0,6% max
		Planarità / Lenght and width Planeité de surface / Ebenflächigkeit	± 0,5% max
Qualità della superficie Surface quality Qualités de la surface Oberflächenqualität	UNI EN ISO 10545-2	Il 95 % min. delle piastrelle di prova deve essere esente da difetti visibili Minimum 95% of the tested tiles must be free from visible defects 95% min. des carreaux de test ne doit pas contenir de défauts visibles Min. 95% der geprüften Fliesen dürfen keine sichtbaren Mängel aufweisen	Conforme Corresponding Conforme Entsprechend
Resistenza ai prodotti chimici Resistance to chemical products Résistance aux produits chimiques Widerstand gegen Chemikalien	UNI EN ISO 10545-13	Minimo GB Minimum GB Minimum GB Minimum GB	Conforme Corresponding Conforme Entsprechend
Resistenza all'abrasione (metodo PEI) Wear resistance (PEI test) Résistance à l'abrasion (méthode PEI) Widerstand gegen Abrieb (nach PEI)	UNI EN ISO 10545-7	Come dichiarato As stated Comme déclaré Wie angegeben	Da 3 a 5 in base al colore From 3 to 5, according to color De 3 à 5, selon couleur Von 3 zu 5, je nachdem farbefarbe
Resistenza alle macchie Staining resistance Résistance aux taches Widerstand gegen Fleckenbildung	UNI EN ISO 10545-14	Min. 3	Conforme Corresponding Conforme Entsprechend
Stabilità dei colori Colours stability Stabilité des couleurs Farbbeständigkeit	DIN 51094	Stabile	Nessuna Variazione
Durezza Superficie Mohs Mohs surface hardness Dureté de la surface (échelle Mohs) Ritzhärte nach Mohs	UNI EN 101	Come dichiarato As stated Comme déclaré Wie angegeben	Naturale 6-8
Resistenza agli sbalzi termici Thermal shock resistance Résistance aux écarts de température Temperaturwechselbeständigkeit	ISO 10545-9	Metodo di prova disponibile Test method available Méthode d'essai disponible Prüfverfahren verfügbar	Resiste Resistant
Resistenza allo scivolamento Slip resistance Résistance au glissement Rutschemmende Eigenchaft	METODO B.C.R.A.	D.M.I. Giugno 1989 n. 236 (μ > 0,40)	> 0,4
	DIN 51130	In funzione dell'ambiente o della zona di lavoro Basing on the environment or on the working area	R9

MADE IN ITALY



Antica Ceramica Rubiera S.r.l.

Via Salvaterra, 18/A - 42048 Rubiera (RE) - ITALY

Tel. +39 0522 628841 - Fax +39 0522 628976

www.anticaceramica.it - info@anticaceramica.it

Seguici su:  

OHSAS 18001
GREENGUARD - UPEC
UNI EN ISO 14021:2016
EN ISO 50001:2011
EN ISO 9001:2008
EN ISO 14001:2004

